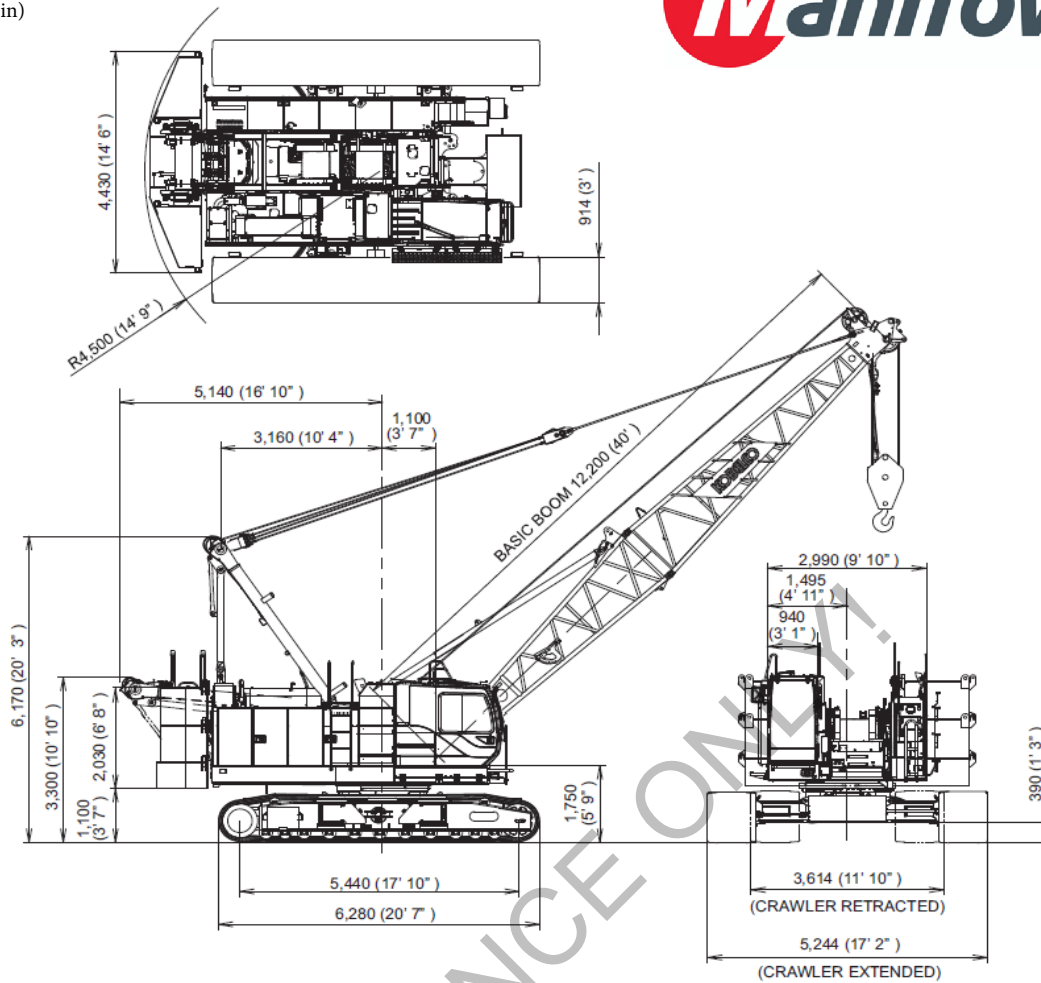


MANITOWOC 8500-1 C.G. CHART

UNIT: mm (ft-in)



NAME	WEIGHT kg	C.G. (UNIT:mm)		REMARK
		HORIZONTAL	HEIGHT	
UPPER MAIN BODY	15,429	-979	2,045	FREE, WITHOUT 3RD
LOWER MAIN BODY	22,314	-154	596	
CAR BODY WEIGHT	6,497	0	656	
SELF REMOVAL UNIT	972	-3,783	2,322	
MAIN HOIST ROPE	581	-230	2,191	
AUX. HOIST ROPE	453	-1,255	2,191	
BOOM HOIST ROPE	184	-3,000	2,165	
COUNTERWEIGHT(1)	9,320	-3,853	1,351	
COUNTERWEIGHT(2L&2R)	8,400	-3,770	2,001	
COUNTERWEIGHT(3L&3R)	8,400	-3,770	2,758	
HALF OF BACKSTOP	272	605	2,710	
TOTAL	72,821	-1,683	1,474	

BOOM LENGTH m(ft)	WEIGHT kg	C.G. mm
12.19(40)	2,850	6,210
15.24(50)	3,190	7,420
18.29(60)	3,540	8,680
21.34(70)	3,760	9,920
24.38(80)	4,100	11,230
27.43(90)	4,320	12,570
30.48(100)	4,670	13,910
33.53(110)	4,770	15,170
36.58(120)	5,110	16,495
39.62(130)	5,330	17,930
42.67(140)	5,680	19,270
45.72(150)	5,770	20,720
48.77(160)	6,120	22,030
51.82(170)	6,340	23,530
54.86(180)	6,690	24,850
57.91(190)	6,780	26,430
60.96(200)	7,130	27,730

TIPPING POINT(mm)

SIDE(LOWER ROLLER TREAD CENTER)	2,165
---------------------------------	-------

NOTE:

※DATUM POINT OF C.G.

HORIZONTAL:FROM CENTER OF SWING(+:FORWARD, -:BACKWARD)

HEIGHT:FROM GROUND

※LOWER MAIN BODY WEIGHT INCLUDES WEIGHT OF ALL SHOES.

※ALL WIREROPE ARE WOUND UP IN THE DRUMS.

※BOOM WEIGHT INCLUDES WEIGHT OF GUY CABLE.

※BOOM WEIGHT INCLUDES HALF OF BACKSTOP WEIGHT.

※C.G. IS DISTANCE FROM BOOMFOOT PIN CENTER.

※IF KOBELCO HOOK BLOCK IS ATTACHED WITH MACHINE, USE BELOW CHART.

TYPE OF HOOK	WEIGHT kg
80t	800
50t	700
32t	500
19t	400
7t Ball Hook	160