

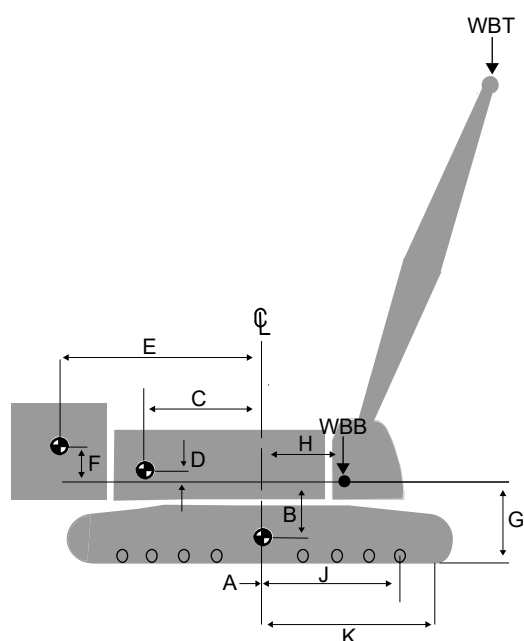
Center of Gravity

Boom No. B40:680-681-682
with 24.9 ft Extended Upper Boom Point

| WEIGHT AND CENTER OF GRAVITY | | |
|------------------------------|-----------------|-------------|
| | Dimension (in.) | Weight (lb) |
| A | 0.0 | 224,982 |
| B | 88.8 | |
| C | 127.6 | 150,414 |
| D | 31.6 | |
| SERIES 1 | | |
| E min | 161.4 | 440,924 |
| E max | 334.6 | |
| F | 45.5 | |
| SERIES 2 | | |
| E min | 161.4 | 661,386 |
| E max | 334.6 | |
| F | 74.9 | |
| SERIES 3 | | |
| E min | 161.4 | 881,848 |
| E max | 34.6 | |
| F | 104.5 | |

| REFERENCE DIMENSIONS (in.) | |
|----------------------------|-------|
| G | 122.6 |
| H | 60.0 |
| J | 162.1 |
| K | 193.7 |
| N | 154.4 |
| 60 in. Pads | |
| P | 50.0 |
| R | 55.0 |
| T | 60.0 |
| 80 in. Pads | |
| P | 70.0 |
| R | 75.7 |
| T | 80.0 |

| LATTICE WEIGHTS | | |
|------------------|--------------------------|----------|
| Boom Length (ft) | Boom No. B40:680-681-682 | |
| | WBB (lb) | WBT (lb) |
| 144.4 | 126,531 | 68,239 |
| 164.0 | 132,213 | 70,234 |
| 183.7 | 140,875 | 75,618 |
| 203.4 | 146,125 | 78,066 |
| 223.1 | 155,280 | 85,341 |
| 242.8 | 160,350 | 87,979 |
| 252.6 | 164,105 | 90,354 |
| 262.5 | 166,718 | 92,519 |
| 272.3 | 169,140 | 93,029 |
| 282.2 | 171,662 | 95,289 |
| 292.0 | 175,574 | 98,859 |
| 301.8 | 178,112 | 101,102 |
| 311.7 | 180,452 | 101,698 |
| 321.5 | 182,918 | 104,017 |
| 331.4 | 184,895 | 102,515 |
| 341.2 | 187,238 | 104,963 |
| 351.1 | 189,415 | 105,730 |
| 360.9 | 191,713 | 108,226 |



Note 1: Weight of all load blocks, hooks, weight ball, slings, hoist lines etc., beneath boom point sheaves is not considered part of boom weights. All items suspended from boom must be considered part of the load.

Note 2: Consult proper crane capacity chart for lifting capacities and allowable boom and jib combinations.

Caution: Not to be used for crane rating purposes.

