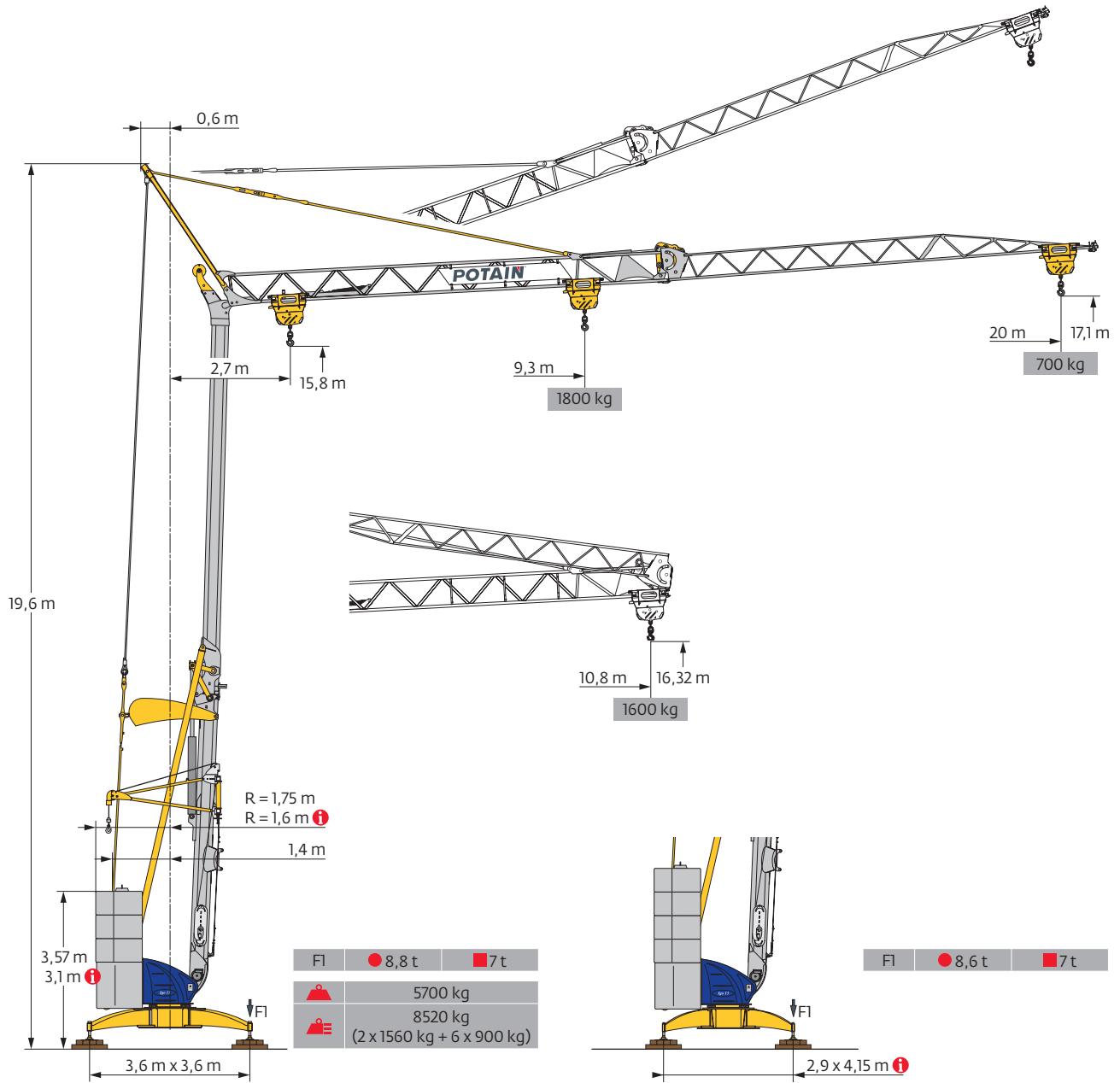
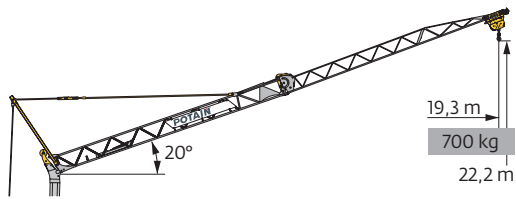






## Igo 13





Courbes de charges / Lastkurven / Load curves / Curvas de cargas / Curve di carico  
 Curvas de carga / Кривые нагрузок

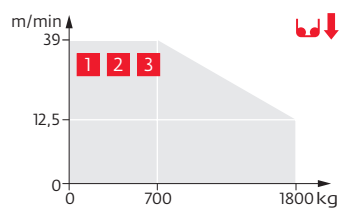
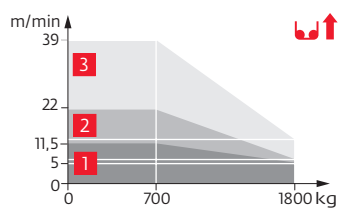


Mécanismes / Triebwerke / Mechanisms / Mecanismos / Meccanismi  
Mecanismos / Механизмы

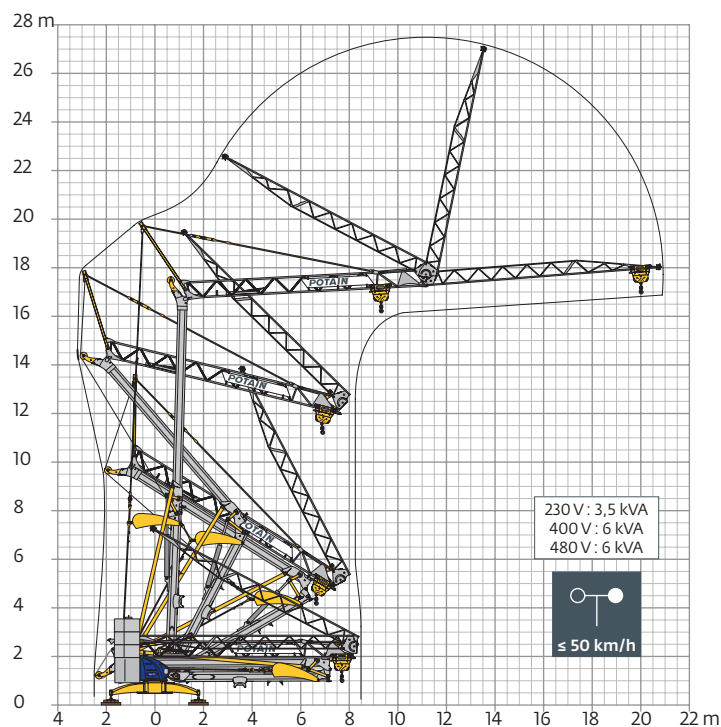
| 230 V - 50 Hz<br>400 V - 50 Hz<br>480 V - 60 Hz                                   |                       |                           |  |                    |                                | ch - PS<br>hp                    | kW                            |     |     |
|---|-----------------------|---------------------------|---|--------------------|--------------------------------|----------------------------------|-------------------------------|-----|-----|
|  | <b>8 LVF 9 Optima</b> | 230 V $\pm$ 20 A <b>1</b> | m/min   | $\updownarrow$ 3,5 | $\uparrow$ 5 $\downarrow$ 12,5 | $\uparrow$ 11,5 $\downarrow$ 39  | 3,3                           | 2,4 |     |
|   |                       |                           | kg  | 1800               | 1800                           | 700                              |                               |     |     |
|   |                       |                           | 230 V $\pm$ 32 A <b>2</b>   | m/min              | $\updownarrow$ 3,5             | $\uparrow$ 6,5 $\downarrow$ 12,5 | $\uparrow$ 22 $\downarrow$ 39 | 5,2 | 3,8 |
|   |                       |                           | kg  | 1800               | 1800                           | 700                              |                               |     |     |
|   |                       |                           | 400 V $\pm$ 480 V <b>3</b>  | m/min              | $\updownarrow$ 3,5             | $\updownarrow$ 12,5              | $\updownarrow$ 39             | 7,5 | 5,5 |
|   |                       |                           | kg  | 1800               | 1800                           | 700                              |                               |     |     |
|  | <b>1 DVF 4</b>        |                           | m/min   | 14 - 28            |                                |                                  | 1,5                           | 1,1 |     |
|  | <b>RVF 20</b>         |                           | tr/min<br>U/min<br>rpm  | 0 $\rightarrow$ 1  |                                |                                  | 1,5                           | 1,1 |     |

|  IEC 60204-32 |  kVA |
|--|---|
| 230 V (+10% -10%) 50 Hz<br>400 V (+10% -10%) 50 Hz<br>480 V (+6% -10%) 60 Hz                   | 230 V 20 A : 4,6 kVA<br>230 V 32 A : 7,4 kVA<br>400 V / 480 V : 11 kVA                  |

8 LVF 9 Optima

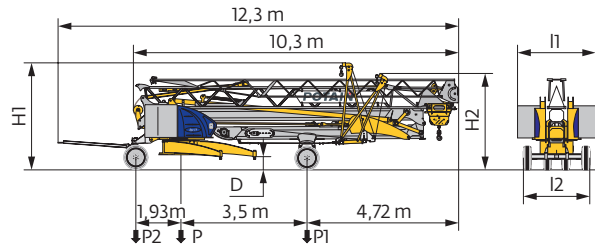


Montage / Montage / Erection / Montaje / Montaggio  
Montagem / Монтаж

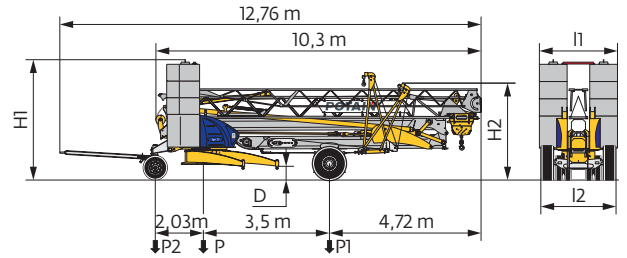


Transport / Transport / Transport / Transporte / Trasporto  
Transporte / Транспортировка

DS62/S81 - DS65/S65

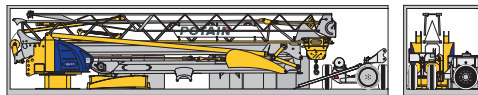


DJ100/S120 - DJ105A/S125A



|              | km/h | D (m)     | H1 (m)    | H2 (m)    | l1 (m)   | l2 (m) | P (kg) | P1 (kg) | P2 (kg) |
|--------------|------|-----------|-----------|-----------|----------|--------|--------|---------|---------|
| DS62/S81     | 10   | 0,33/0,18 | 3,41/3,26 | 2,98/2,83 | 2,48/2,2 | 2,2    | 9340   | 4970    | 4370    |
| DS65/S65     | 25   | 0,33/0,18 | 3,41/3,26 | 2,98/2,83 | 2,48/2,2 | 2      | 9700   | 5100    | 4600    |
| ... / ...    |      |           |           |           |          |        |        |         |         |
|              | km/h | D (m)     | H1 (m)    | H2 (m)    | l1 (m)   | l2 (m) | P (kg) | P1 (kg) | P2 (kg) |
| DJ100/S120   | 10   | 0,33/0,18 | 3,74/3,59 | 3/2,85    | 2,48/2,2 | 2,4    | 15455  | 6275    | 9180    |
| DJ105A/S125A | 25   | 0,33/0,18 | 3,74/3,59 | 3/2,85    | 2,48/2,2 | 2,4    | 15745  | 6485    | 9260    |
| ... / ...    |      |           |           |           |          |        |        |         |         |

Conteneur High Cube 40' / Container High Cube 40' / Conteneur High Cube 40' / Contenedor High Cube 40'  
Container High Cube 40' / Contentor High Cube 40' / 40-футовый контейнер повышенной вместимости High Cube



|   | FR  | DE  | EN  | ES   | IT  | PT   | RU   |
|---|---|---|---|--|---|--|--|
| R | Rayon de giration   | Schwenk radius  | Rear slewing radius   | Radio de giro  | Raggio di rotazione   | Raio de rotação  | Задний габарит   |
| i | Nous consulter  | Auf Anfrage   | Consult us  | Consultarnos   | Consultateci  | Consultar-nos  | Проконсультируйтесь у нас  |
| ● | Réactions en service  | Reaktionskräfte in Betrieb  | Reactions in service  | Reacciones en servicio   | Reazioni in servizio  | Reacções em serviço  | Реакция при работе   |
| ■ | Réactions hors service  | Reaktionskräfte außer Betrieb   | Reactions out of service  | Reacciones fuera de servicio   | Reazioni fuori servizio   | Reacções fora de serviço   | Реакция в покое  |
| ⚖ | Poids à vide, sans lest, sans trains de transport, avec flèche maxi. et hauteur standard. | Gewicht ohne Last, ohne Ballast, ohne Transportachsen, mit max. Auslager und Standardhöhe | Weight without load, without ballast, without transport axes, with max. jib and standard height | Peso en vacío, sin lastre, sin trenes de transporte con flecha y altura estandar | Peso a vuoto, senza zavorra, senza assali di trasporto, con braccio max e altezza standard. | Peso em vazio, sem lastro, sem eixos de transporte com lança máxima e altura standard. | Вес без груза, без балласта, без осей для транспортировки, с максимальным вылетом стрелы и стандартной высотой |
| ⚖ | Poids total du lest   | Ballast-Gesamtgewicht   | Total ballast weight  | Peso total del lastre  | Peso totale della zavorra   | Peso total do lastro   | Общий вес балласта   |
| 🔧 | Équipements standards   | Standardausrüstungen  | Standard equipment  | Equipamiento de serie  | Equipaggiamento standard  | Equipamento de série   | Стандартное оборудование   |
| 🔧 | Équipements optionnels  | Sonderausrüstungen  | Options   | Equipamiento opcional  | Equipaggiamento in opzione  | Equipamento opcional   | Дополнительное оборудование (опция)  |
| ⬆ | Levage  | Heben   | Hoisting  | Elevación  | Solleveramento  | Elevação   | Подъем   |
| ➡ | Distribution  | Katzfahren  | Trolleying  | Distribución   | Distribuzione   | Distribuição   | Перемещение по стреле  |
| 🔄 | Orientation   | Schwenken   | Slewing   | Orientación  | Rotazione   | Rotação  | Поворот  |
| ⚡ | 50 Hz Monophasé   | 50 Hz Einphasige  | 50 Hz Single phase  | 50 Hz Monofasica   | 50 Hz Monofase  | 50 Hz monofásica   | Однофазное напряжение 50Hz   |
| ⚡ | Puissance requise   | Erforderliche Leistung  | Required power  | Potencia Necesaria   | Potenza richiesta   | Potência Necessária  | Потребляемая мощность  |
| 🚚 | Transport grue toute lestée.  | Krantransport mit voller Ballastierung.   | Transport of crane with full ballast.   | Transporte grúa completamente lastrada.  | Trasporto con gru completamente zavorrata.  | Transporte de grua totalmente balastrada.  | Перевозка крана с полным балластом   |
| ⚠ | Hauteurs sous crochet données moufle plaquée  | Hakenhöhen werden mit plattiertem Haken angegeben   | Hook heights given with plated pulley block   | Altura bajo gancho con pasteca bloqueada   | Altezza sotto gancio con bozzello in contatto con carrello                                  | Altura ao gancho com o cadernal em contacto com o carrinho                             | высота под крюком дана при условии, что крюковая подвеска соприкасается с кареткой                             |
|   | Document commercial non contractuel   | Unverbindliches Vertriebsdokument   | This commercial document is not legally binding   | Documento comercial no contractual   | Documento commerciale non vincolante  | Documento comercial não contratual   | Этот коммерческий документ не является юридически обязательным   |
|   | Pour toute information technique se référer à la notice correspondante                    | Für technische Informationen, siehe die entsprechenden Anweisungen                        | For any technical information, please refer to the corresponding instructions                   | Para cualquier información técnica, ver la noticia correspondiente               | Per tutte le informazioni tecniche fare riferimento al catalogo istruzioni                  | Para qualquer informação técnica complementar consultar as respectivas instruções      | Для получения технической информации, см. соответствующие инструкции   |

