

# Hup 32-27

Ultimate versatility. Max profits.

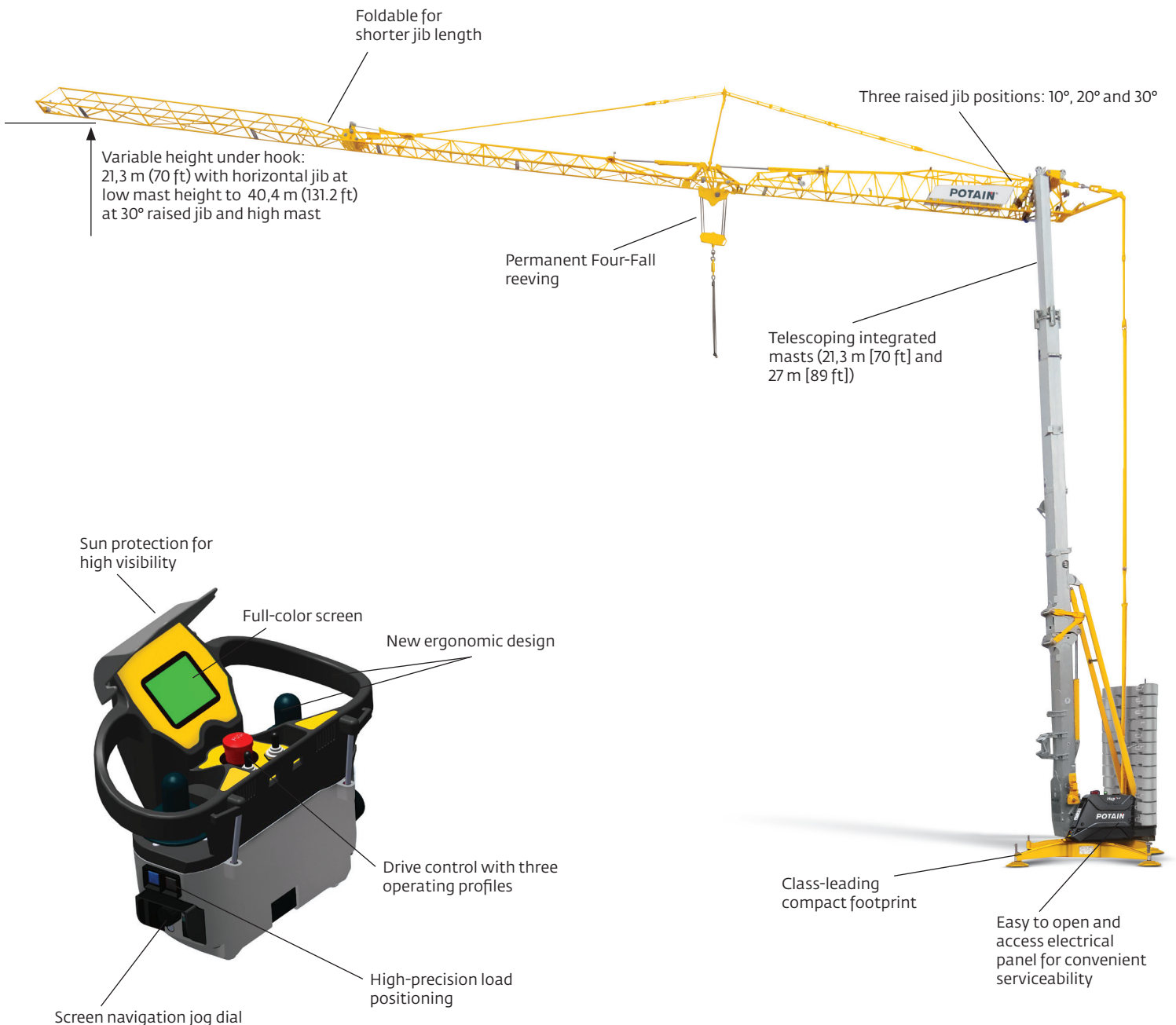
Maximum capacity: 4 t (4.4 USt)

Maximum radius: 32 m (105 ft)

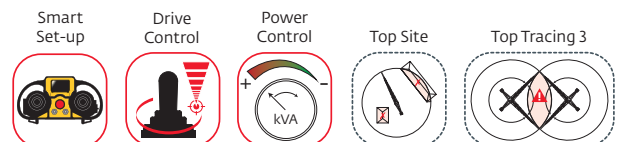
Maximum load at jib end: 1 t (1.1 USt)

Maximum HUH with horizontal jib: 27 m (89 ft)

Maximum HUH at 30° raised jib: 40,4 m (131.2 ft)



Exclusive remote control with drive customizations, new ergonomics and Smart Set-up.



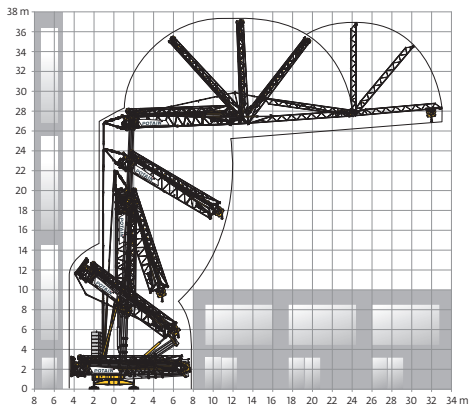
## Maximum reach for class-leading performance

- New crane technology offers multiple configurations for more lifting options
- More than 20 possible crane configurations with one mast, two telescoping heights, four jib positions and a potential partial jib configuration
- Other performance features include: High Performance Lifting technology, High Performance Slewing, new and exclusive Power Control, and Drive Control



## Unmatched compact design

- The Hup 32-27's class-leading compact package is ideal for both challenging job sites and easy transport
- 4 m (13.1 ft) maximum height and 12 m (39.4 ft) length for easy transport and can fit in a high cube container
- Compatible with Igo transport axles
- New adjustable system for simple and efficient set up on ground with up to 8% slope
- Easy to open access electrical panel for convenient serviceability

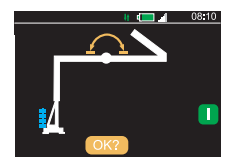
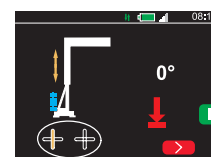
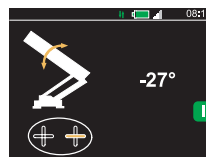


## Innovative movement technology enables unfolding in narrow and compact areas

- Height under hook with maximum raised jib is above 40 m (131 ft) for superior reach on the job site
- Jib unfolds over the top to preserve space under the crane to when working next to buildings
- During erection, the Hup 32-27 retains its compact transport dimensions of up to 10 m (32.8 ft) high

## Exclusive remote control capabilities

- 100% remote control-powered erection and piloting delivers convenient and secure operation
- Three operating profiles (High Precision, Standard and Dynamic) can be selected by the operator
- Full-color screen with jog dial navigation



## Smart Set-up software for simplified crane erection

- Exclusive Potain software to provide intuitive user interface
- Makes folding and unfolding the crane simple and clear with step-by-step directions clearly visible on the control screen