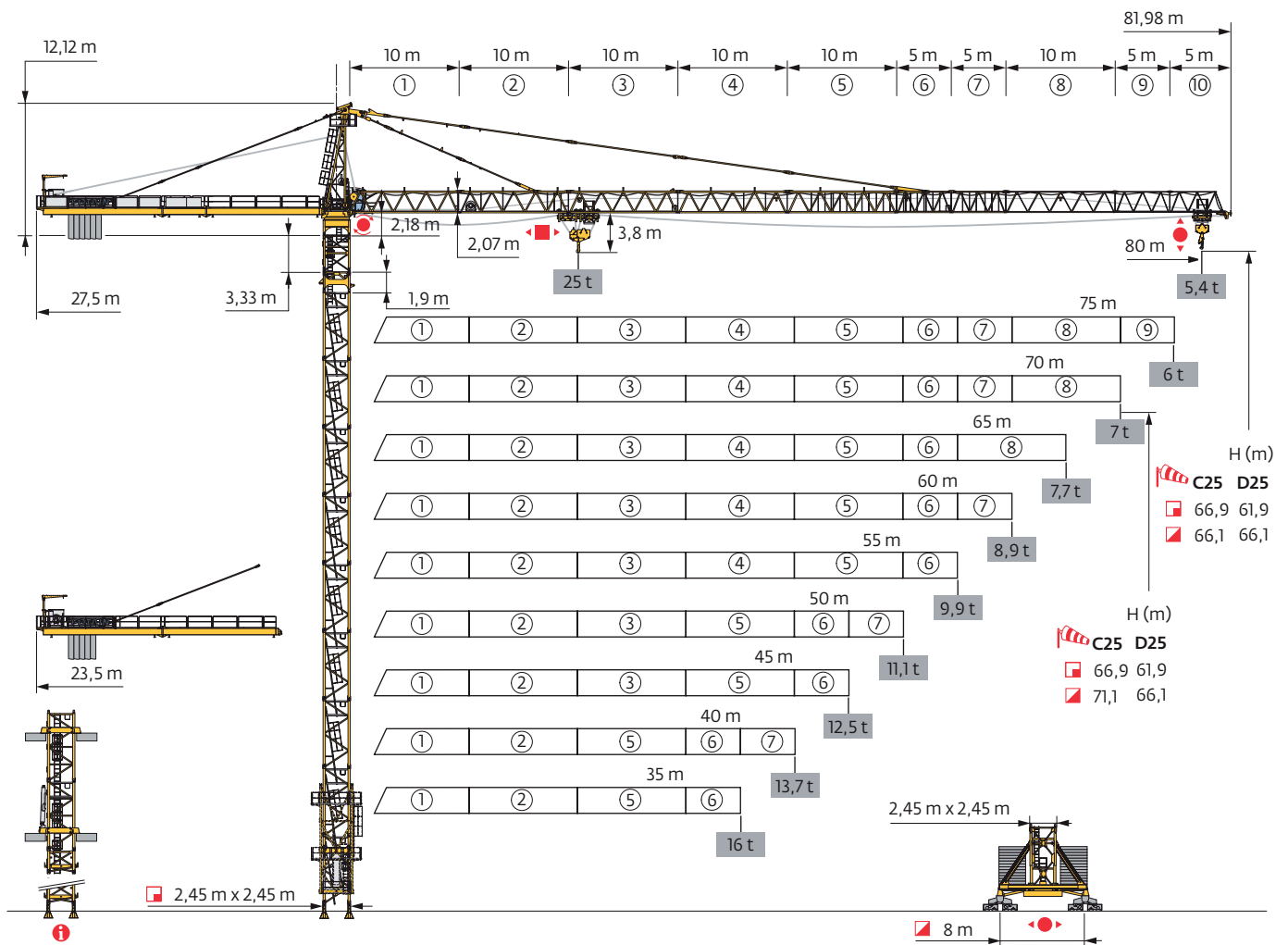
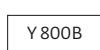
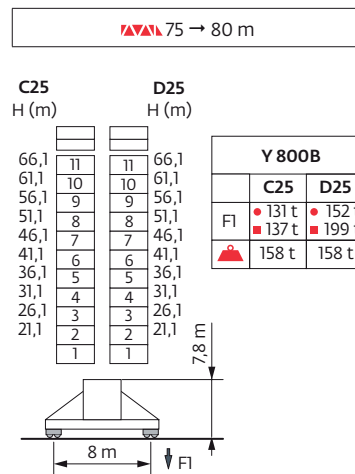
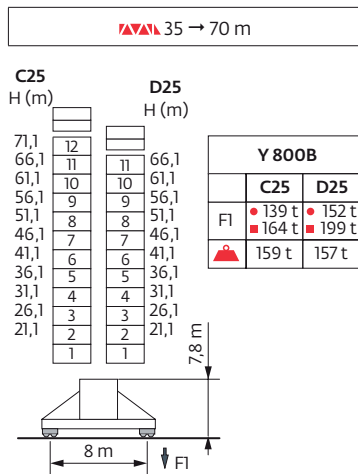
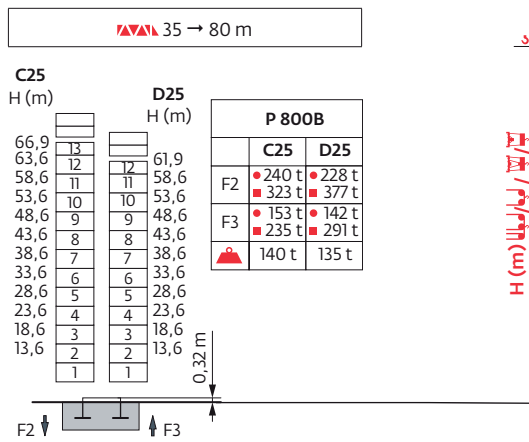
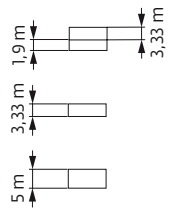


## MD 560 B M25



Mât - Réactions / Mast - Reaktionskräfte / Mast - Reactions / Mástil - Reacciones / Torre - Reazioni  
 Tramo - Reações / Реакция опор мачты

2,45 m



H1 = H



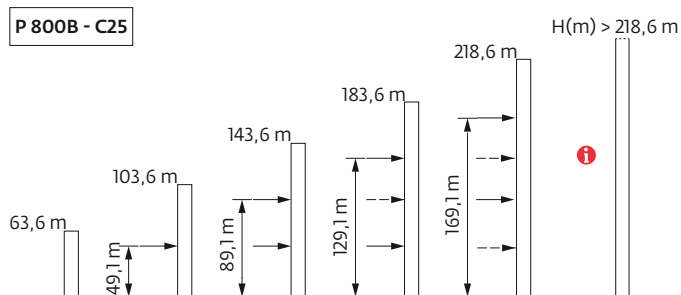
H2 = H - 0,8 m



H3 = H - 1,2 m











Ancrages / Verankerungen / Anchorages / Anclajes / Ancoraggi  
 Ancoragem / Анкера

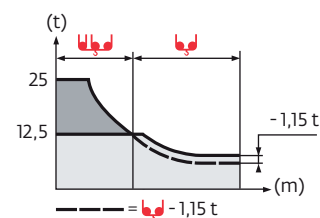
D25 













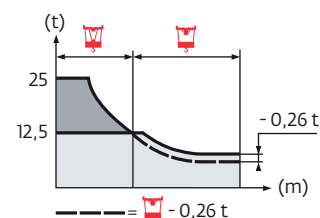
Courbes de charges / Lastkurven / Load curves / Curvas de carga / Curve di carico  
 Curvas de carga / Кривые нагрузок



80 m	3,75	▶	20,9	22	25	27	30	32	35	37,4	40,3	45	50	55	60	65	70	75	80	m
			25	23,6	20,3	18,6	16,4	15,1	13,6	12,5	-12,5	11	9,7	8,7	7,8	7,1	6,4	5,9	5,4	t
75 m	3,75	▶	21,1	22	25	27	30	32	35	37,7	40,7	45	50	55	60	65	70	75		m
			25	23,8	20,5	18,7	16,5	15,3	13,7	12,5	-12,5	11,1	9,8	8,8	7,9	7,2	6,5	6		t
70 m	3,75	▶	22	25	27	30	32	35	39,6	42,8	45	50	55	60	65	70				m
			25	21,6	19,7	17,5	16,2	14,5	12,5	-12,5	11,8	10,4	9,3	8,4	7,7	7				t
65 m	3,75	▶	22,1	25	27	30	32	35	39,7	42,9	45	50	55	60	65					m
			25	21,7	19,8	17,5	16,2	14,6	12,5	-12,5	11,9	10,5	9,4	8,5	7,7					t
60 m	3,75	▶	23	25	27	30	32	35	41,4	44,7	45	50	55	60						m
			25	22,7	20,8	18,4	17,1	15,3	12,5	-12,5	12,4	11	9,9	8,9						t
55 m	3,75	▶	23,1	25	27	30	32	35	41,6	44,9	45	50	55							m
			25	22,8	20,9	18,5	17,1	15,4	12,5	-12,5	12,5	11,1	9,9							t
50 m	3,75	▶	23,2	25	27	30	32	35	40	41,7	45,1	50								m
			25	22,9	21	18,6	17,2	15,5	13,2	12,5	-12,5	11,1								t
45 m	3,75	▶	23,1	25	27	30	32	35	40	41,6	45									m
			25	22,9	20,9	18,5	17,2	15,4	13,1	12,5	-12,5									t
40 m	3,75	▶	23,2	25	27	30	32	35	40											m
			25	23	21	18,6	17,3	15,5	13,2											t
35 m	3,75	▶	23,2	25	27	30	32	35												m
			25	23	21	18,6	17,2	15,5												t



80 m	2,75	▶	21,3	22	25	27	30	32	35	38,5	39,2	40	45	50	55	60	65	70	75	80	m
			25	24	20,8	19	16,8	15,6	14	12,5	-12,5	12,2	10,6	9,3	8,3	7,4	6,7	6	5,5	5	t
75 m	2,75	▶	21,4	22	25	27	30	32	35	38,9	39,6	40	45	50	55	60	65	70	75		m
			25	24,2	21	19,2	17	15,8	14,2	12,5	-12,5	12,4	10,7	9,4	8,4	7,5	6,8	6,1	5,6		t
70 m	2,75	▶	22,4	25	27	30	32	35	40	40,8	41,6	45	50	55	60	65	70				m
			25	22,1	20,2	17,9	16,6	15	12,8	12,5	-12,5	11,4	10	8,9	8	7,3	6,6				t
65 m	2,75	▶	22,5	25	27	30	32	35	40	41	41,8	45	50	55	60	65					m
			25	22,2	20,3	18	16,7	15,1	12,9	12,5	-12,5	11,4	10,1	9	8,1	7,3					t
60 m	2,75	▶	23,4	25	27	30	32	35	40	42,8	43,5	45	50	55	60						m
			25	23,2	21,3	18,9	17,5	15,8	13,5	12,5	-12,5	12	10,6	9,5	8,5						t
55 m	2,75	▶	23,5	25	27	30	32	35	40	42,9	43,7	45	50	55							m
			25	23,3	21,4	19	17,6	15,9	13,6	12,5	-12,5	12,1	10,7	9,5							t
50 m	2,75	▶	23,6	25	27	30	32	35	40	43,1	43,8	45	50								m
			25	23,4	21,5	19	17,7	15,9	13,6	12,5	-12,5	12,1	10,7								t
45 m	2,75	▶	23,5	25	27	30	32	35	40	43	43,8	45									m
			25	23,4	21,4	19	17,7	15,9	13,6	12,5	-12,5	12,1									t
40 m	2,75	▶	23,7	25	27	30	32	35	40												m
			25	23,5	21,5	19,1	17,8	16	13,7												t
35 m	2,75	▶	23,6	25	27	30	32	35													m
			25	23,5	21,5	19,1	17,7	16													t



Lest de base / Grundballast / Base ballast / Lastre de base / Zavorra di base  
 Lastro da base / Базовый Балласт

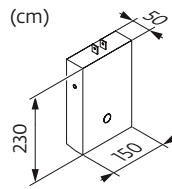
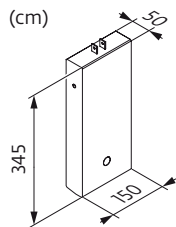
2,45 m	Y 800B C25 D25	35 → 70 m	H (m)	71,1	66,1	61,1	56,1	51,1	46,1	41,1	36,1	31,1	26,1	21,1
			(t)	96	72	72	72	72	72	72	72	72	72	72
	Y 800B C25 D25	75 → 80 m	H (m)	66,1	61,1	56,1	51,1	46,1	41,1	36,1	31,1	26,1	21,1	
			(t)	72	72	72	72	72	72	72	72	72	72	72

Poids de flèche & lest de contre-flèche / Auslegergewicht & Gegenauslegerballast / Jib weight & counter-jib ballast / Peso de flecha y lastre de contra-flecha / Peso del braccio & zavorra di contro-braccio / Peso da lança & lastro da contra lança  
 Вес стрелы и балласт контр-стрелы

H (m)	L (kg) (+/- 5%)		100 LVF			150 LVF GH		
	W	W	6000 kg	4000 kg	(kg)	6000 kg	4000 kg	(kg)
80 m	25665	26135	6	0	36000	4	2	32000
75 m	25090	25560	5	1	34000	3	3	30000
70 m	24430	24900	5	1	34000	2	4	28000
65 m	23425	23895	5	0	30000	1	5	26000
60 m	23090	23560	5	0	30000	2	3	24000
55 m	22115	22580	4	1	28000	1	4	22000
50 m	20520	20990	5	0	30000	2	3	24000
45 m	19545	20015	4	1	28000	2	3	24000
40 m	17745	18215	2	3	24000	1	3	18000
35 m	16970	17440	1	4	22000	0	4	16000



CBC - 6000 kg

CBD - 4000 kg




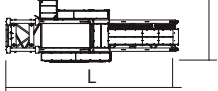
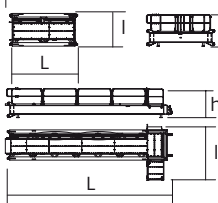
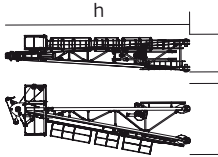
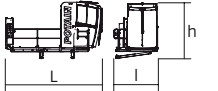
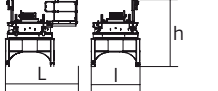
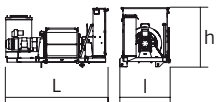
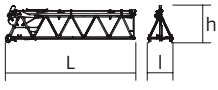
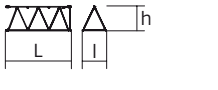
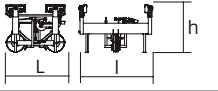

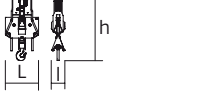

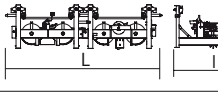


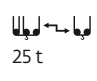
Encombrenent et poids / Abmessungen und Gewicht / Dimensions and weight / Dimensiones y peso / Ingombro e peso  
dimensões e pesos / габаритные размеры и вес

Partie tournante / Drehender Kranteil / Slewing crane part / Parte giratoria

Parte rotante / Parte rotativa / Поворотная часть :  80 m -  100 LVF

 x 14

 x 10

Partie tournante / Drehender Kranteil / Slewing crane part Parte giratoria / Parte rotante / Parte rotativa Поворотная часть		L (m)	l (m)	h (m)	kg (+/- 5%)	
Contre-flèche / Gegenausleger Counter-jib / Contra-flecha Controbraccio / Contra-lança Контр-стрела		11,69	4,13	1,96	6490	
		4,2	2,02	1,96	1980	
		11,04	3,57	2,07	4925	
Porte-flèche / Auslegerträger Cathead / Porta-flecha Cuspide / Suporte de lança Оголовок		3,36	1,98	9,86	8950	
Cabine / Kabine Cab / Cabina Cabina / Cabina Кабина		Ultra View	5	2,5	2,77	1875
Pivot / Krankopf Towerhead / Pivote Portaralla / Pivot Секция поворотной части		□2,45 m	3,7	2,9	3,87	11190
Treuil de levage (+ câble) / Hubwerk (+ Seil) Hoisting winch (+ rope) / Mecanismo de elevación (+ cabo) Argano di sollevamento (+ fune) Guincho de elevação (+ cabo) Подъемная лебедка (+ канатом)		100 LVF 150 LVF GH	3,17 4,27	1,6 1,93	1,73 1,9	4145 9230
Élément de flèche / Auslegerelement Jib section / Elemento de flecha Elemento di braccio / Elemento de lança Секция стрелы		①	10,36	2,95	3,12	5150
		② 10 DVF	10,33	1,9	2,34	4870
		③	10,22	1,9	2,4	2965
		④	10,23	1,9	2,32	2675
		⑤	10,23	1,9	2,32	2795
Élément de flèche / Auslegerelement Jib section / Elemento de flecha Elemento di braccio / Elemento de lança Секция стрелы		⑥	5,32	1,9	2,2	1700
		⑦	5,24	1,9	2,04	1030
		⑨	5,18	1,9	1,97	545
		⑩	5,16	1,9	1,97	500
Chariot / Laufkatze Trolley / Carrello Carro / Carro-distribuidor Тележка		 25 t	1,8	2,26	1,44	760
Moufle / Hubflasche Pulley block / Aparejo Bozzello / Cadernal Полиспаст		 25 t	1,18	0,44	2,39	850
Chariot / Laufkatze Trolley / Carrello Carro / Carro-distribuidor Тележка		 25 t	4,1	2,19	1,16	1195
Moufle / Hubflasche Pulley block / Aparejo Bozzello / Cadernal Полиспаст		 25 t	1,83	0,34	2,34	905

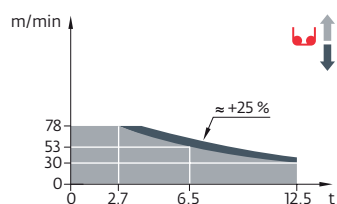
Pyłone / Kranturm / Crane tower Mástil / Torre / Torre Башня крана		L (m)	I (m)	h (m)	kg (+/- 5%)
Cage de télescopage / Teleskopwagen Telescopic cage / Jaula de telescopaje Gabbia di telescopaggio / Gaiola de telescopagem для телескопирования крана		2,45 m	4,62	5,79 10,23	12920
K 849/K 849 Mât de télescopage / Teleskopiermast Telescoping mast / Tramo de telescopaje Elemento di telescopaggio / Tramo de Telescopagem Мачта для телескопирования		2,45 m	2,14	3,25 2,5	2985
KRMT 849A KRMT 849C		2,45 m	5,23 3,57	2,55 2,53	4090 3205
Pieds de scellement / VerankerungsfüÙe Fixing angles / Pie de empotramiento Montante da anegare / Angulos fixadores анкера		P 800B	0,75	0,75 1,28	465
Mât-châssis / Grundmasteinheit Basic mast unit / Tramo-chasis Elemento base / Tramo-chassis Мачта для крепления к шасси		Y 800B	6,03	2,93 2,93	8620
Haubans / Mastabstützungen Struts / Tornapuntas Puntoni / Escoras Растяжка		Y 800B	5,51	0,5 0,45	1110
1/2 Longeron / 1/2 Långsträger 1/2 Side member / 1/2 Larguero 1/2 Longherone / 1/2 Longarina 1/2 боковина		Y 800B	5,68	1,24 0,73	1520
Longeron / Långsträger Side member / Larguero Longherone / Longarina боковина		Y 800B	12	1,24 0,73	3050
Support lest / Ballsträger Ballast support / Soporte de lastre Supporto zavorra / Suporte de lastro Опора балласта		Y 800B	3,75	0,37 0,92	1085
Traverse de châssis / Unterwagentraverse Chassis beam / Traviesa chasis Traversa carro / Travessa chasis балка шасси		Y 800B	8,7	0,83 0,74	2240















Mécanismes / Triebwerke / Mechanisms / Mecanismos / Meccanismi  
 Mecanismos / Механизмы

400 V - 50 Hz											ch - PS hp	kW			
	<b>100 LVF 63 Optima</b>	m/min	30	53	73	78	15	27	37	39	100	75	726 m		
	t	12,5	6,5	4,4	2,7	25	13	8,8	5,4						
	<b>150 LVF 63 GH Optima</b>	m/min	44	76	101	138	191	23	42	60	84	96	150	110	1200 m
	t	12,5	6,5	4,4	2,7	1	25	13	8,8	5,4	3,6				
	<b>10 DVF 10</b>	m/min	0 → 64 (25 t) 0 → 100 (12,5 t) 0 → 110 (6,25 t)									10	7,4		
	<b>RVF 173 Optima+</b>	tr/min U/min rpm	0 → 0,9									3 x 10	3 x 7,5		
	<b>Y 800B</b>														

IEC 60204-32	kVA
400 V (+10% -10%) 50 Hz	100 LVF : 117 kVA 150 LVF GH : 157 → 97 kVA

**100 LVF 63 Optima**



	FR	DE	EN	ES	IT	PT	RU
	Profil de vent suivant EN 14439 C25-D25	Windbedingungen gemäss EN 14439 C25-D25	Wind conditions according to EN 14439 C25-D25	Conformidad de los condiciones de viento EN 14439 C25-D25	Condizioni del vento secondo EN 14439 C25-D25	Perfil de vento conforme EN 14439 C25-D25	Ветровой режим в соответствии с EN 14439 C25-D25
	Équipements standards	Standardausrüstungen	Standard equipment	Equipamiento de serie	Equipaggiamento standard	Equipamento de série	Стандартное оборудование
	Équipements optionnels	Sonderausrüstungen	Options	Equipamiento opcional	Equipaggiamento in opzione	Equipamento opcional	Дополнительное оборудование (опция)
	Réactions en service	Reaktionskräfte in Betrieb	Reactions in service	Reacciones en servicio	Reazioni in servizio	Reacções em serviço	Реакция при работе
	Réactions hors service	Reaktionskräfte außer Betrieb	Reactions out of service	Reacciones fuera de servicio	Reazioni fuori servizio	Reacções fora de serviço	Реакция в покое
	Poids à vide sans lest avec flèche et hauteur maximum	Gewicht ohne Last, ohne Ballast, mit Ausleger und max. Höhe	Weight without load, without ballast, with jib and max. height	Peso en vacío sin lastre, con flecha y altura máxima	Peso a vuoto, senza zavorra, con braccio e altezza massimi.	Peso em vazio sem lastro com lança e altura máxima.	Вес пустого, без балласта, со стрелой, максимальной высоты.
	Poids de flèche	Auslegergewicht	Jib weight	Peso de flecha	Peso del braccio	Peso da lança	Вес стрелы
	Poids total du lest	Ballast-Gesamtgewicht	Total ballast weight	Peso total del lastre	Peso totale della zavorra	Peso total do lastro	Общий вес балласта
	Camion 13,4 m	Lkw 13,4 m	Lorry 13,4 m	Camión 13,4 m	Camion 13,4 m	Camião 13,4 m	Рзусовой автомобиль 13,4 м
	Conteneur High Cube 40', et/ou Flat Rack 20'	Container High Cube 40', und/oder Flat Rack 20'	Container High Cube 40', and/or Flat Rack 20'	Contenedor High Cube 40', y/o Flat Rack 20'	Container High Cube 40', e/o Flat Rack 20'	Contentor High Cube 40', e/ou Flat Rack 20'	40-футовый контейнер повышенной вместимости High Cube, и/или 20-футовая открытая платформа Flat Rack
	Cadre d'ancrage serré	Fester Verankerungsrahmen	Tightened anchorage frame	Marco de anclaje de apriete	Quadro di ancoraggio stretto	Quadro de amarração apertado	Прикрепленная анкерная рама
	Cadre d'ancrage desserré	Löser Verankerungsrahmen	Loosened anchorage frame	Marco de anclaje de desapriete	Quadro di ancoraggio allentato	Quadro de amarração solto	Отсоединенная анкерная рама
	Levage	Heben	Hoisting	Elevación	Sollevarmento	Elevação	Подъем
	Distribution	Katzfahren	Trolleying	Distribución	Distribuzione	Distribuição	Перемещение по стреле
	Orientation	Schwenken	Slewing	Orientación	Rotazione	Rotação	Поворот
	Translation	Kranfahren	Travelling	Traslación	Traslazione	Traslacção	Перемещение крана
	Puissance requise	Erforderliche Leistung	Required power	Potencia Necesaria	Potenza richiesta	Potência Necessária	Потребляемая мощность
	Fonction Power Control : vitesses treuils adaptées à la puissance disponible	Funktion Power Control: Geschwindigkeiten der Triebwerke werden an die verfügbare Leistung angepasst	Power Control Function: winch speeds adapted to the available power	Función Power Control: marchas de los cabrestantes adaptadas a la potencia disponible	Funzione Power Control: velocità degli argani adattate alla potenza disponibile	Função Power Control: velocidades de guincho adaptadas à potência disponível	Функция контроля мощности Power Control: регулировка скорости лебедок в зависимости от доступной мощности
	Nous consulter	Auf Anfrage	Consult us	Consultarnos	Consultateci	Consultar-nos	Проконсультируйтесь у нас
	Document commercial non contractuel. Pour toute information technique se référer à la notice correspondante.	Unverbindliches Vertriebsdokument. Für technische Informationen, siehe die entsprechenden Anweisungen.	This commercial document is not legally binding. For any technical information, please refer to the corresponding instructions.	Documento comercial no contractual. Para cualquier información técnica, ver la noticia correspondiente.	Documento commerciale non vincolante, per tutte le informazioni tecniche fare riferimento al catalogo istruzioni.	Documento comercial não contratual. Para qualquer informação técnica complementar consultar as respectivas instruções.	Этот коммерческий документ не является юридически обязательным. Для получения технической информации, см. соответствующие инструкции.



Grove Manitowoc National Crane Potain

**Americas**  
**Manitowoc, Wisconsin, USA**  
 Tel: +1 920 684 6621  
 Fax: +1 920 683 6277

**Shady Grove, Pennsylvania, USA**  
 Tel: +1 717 597 8121  
 Fax: +1 717 597 4062

**Europe, Middle East, Africa**  
**Dardilly, France**  
 Tel: +33 (0)4 72 18 20 20  
 Fax: +33 (0)4 72 18 20 00

**China**  
**Shanghai, China**  
 Tel: +86 21 6457 0066  
 Fax: +86 21 6457 4955

**Greater Asia-Pacific**  
**Singapore**  
 Tel: +65 6264 1188  
 Fax: +65 6862 4040

[www.manitowoccranes.com](http://www.manitowoccranes.com)