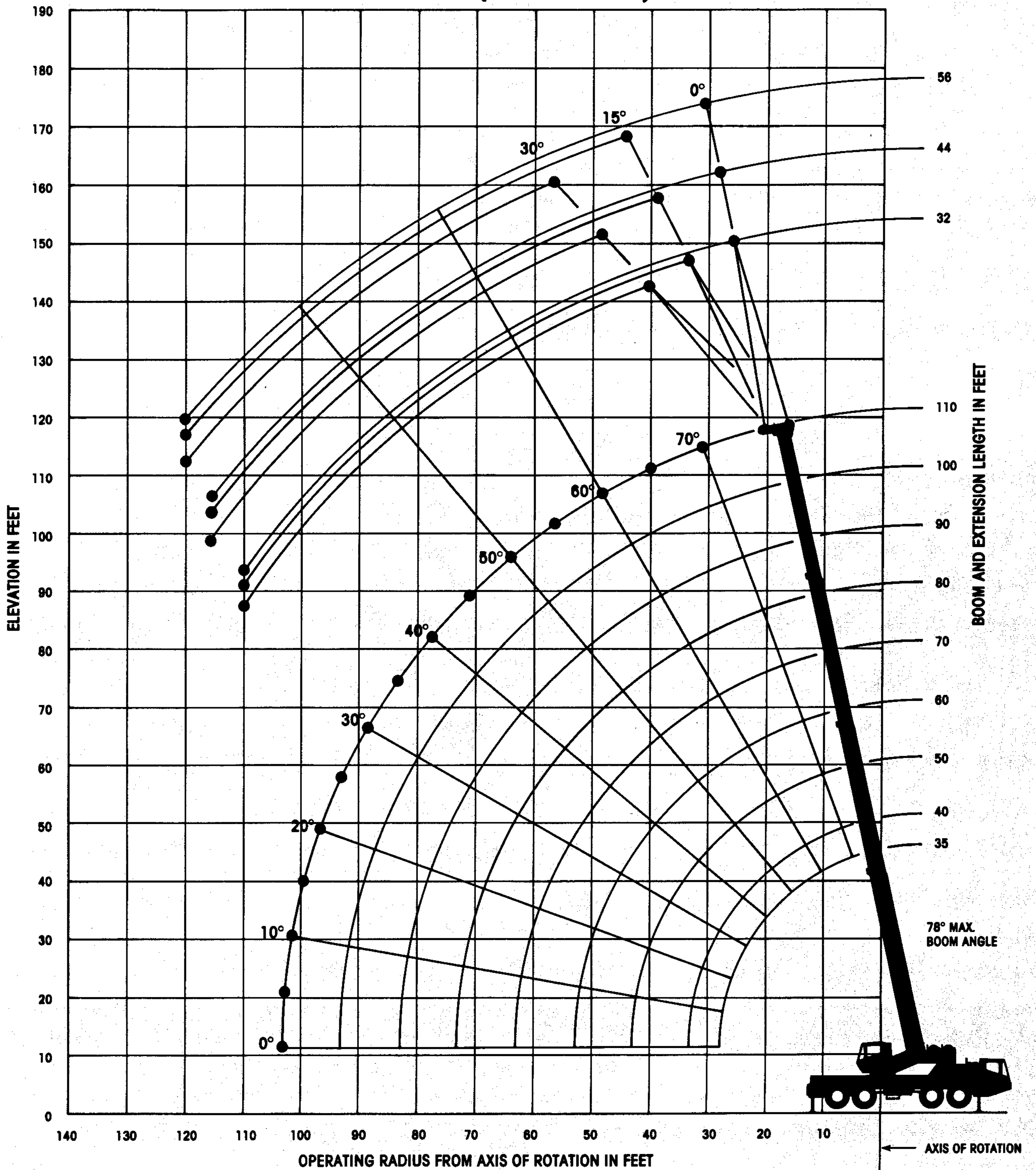


GROVE[®]
worldwide

AT700B

All-terrain hydraulic crane/85% Domestic

RANGE DIAGRAM (UNLADEN BOOM)



NOTES FOR LIFTING CAPACITIES

“WARNING: THIS CHART IS ONLY A GUIDE. The Notes below are for illustration only and should not be relied upon to operate the crane. The individual crane’s load chart, operating instructions and other instruction plates must be read and understood prior to operating the crane.”

1. All rated loads have been tested to and meet minimum requirements of SAE J1063 OCT80 - Cantilevered Boom Crane Structures - Method of Test, and do not exceed 85% of the tipping load on outriggers (75% on rubber) as determined by SAE J765 OCT80 Crane Stability Test Code.
2. Capacities given do not include the weight of hookblocks, slings, auxiliary lifting equipment and load handling devices. Their weights MUST be added to the load to be lifted. When more than minimum required reeving is used, the additional rope weight shall be considered part of the load.
3. Capacities appearing above the bold line are based on structural strength and tipping should not be relied upon as a capacity limitation.
4. All capacities are for crane on firm, level surface. It may be necessary to have structural supports under the outrigger floats or tires to spread the load to a larger bearing surface.
5. When either boom length or radius or both are between values listed, the smallest load shown at either the next larger radius or boom length shall be used.
6. For outrigger operation, ALL outriggers shall be fully extended with tires raised free of ground before raising the boom or lifting loads.
7. Tires shall be inflated to the recommended pressure before lifting on rubber.
8. Defined Arc $\pm 6^\circ$ on either side of longitudinal centerline of machine.
9. With boom extension in working position and main boom length greater than 80 ft., boom angle must not be less than 35° , since loss of stability will occur causing a tipping condition.

Constant improvement and engineering progress makes it necessary that we reserve the right to make specification, equipment, and price changes without notice. Illustrations shown may include optional equipment and accessories and may not include all standard equipment.



Grove Worldwide - World Headquarters
 1565 Buchanan Trail East
 Shady Grove, Pennsylvania 17256
 Phone: (717) 597-8121
 Telex: 1842308 Fax: (717) 597-4062

Grove North America
 P.O. Box 21, Shady Grove, Pennsylvania 17256
 Western Hemisphere, Asia/Pacific
 Phone: (717) 597-8121
 Telex: 1842308 Fax: (717) 597-4062

Grove Europe, Crown Works
 Sunderland SR4 6TT, England
 Europe, Africa, Middle East, Near East
 Phone: (091) 565-6281
 Telex: 53484 CRANES G Fax: (091) 564-0442

RATED LIFTING CAPACITIES (POUNDS) ON RUBBER (PICK & CARRY - BOOM CENTERED OVER REAR) 16.00R21 AND 17.5R25 TIRES

Radius in Feet	Main Boom Length in Feet						
	35	40	50	*60	70	80	90
10	45,500 (66)	45,500 (69.5)					
12	39,400 (62.5)	39,400 (66.5)	39,400 (71.5)				
15	32,450 (56.5)	32,450 (61.5)	32,450 (67.5)				
20	24,550 (45)	24,550 (52.5)	24,550 (61)	24,550 (66.5)			
25	19,250 (29.5)	19,250 (42)	19,250 (54)	19,250 (61)	17,200 (65.5)	10,050 (69)	5,180 (71.5)
30		14,900 (28)	14,900 (46.5)	14,900 (55)	14,900 (61)	10,050 (65)	5,180 (68)
35			11,450 (37)	11,450 (49)	11,450 (56)	10,050 (61)	5,180 (64.5)
40			9,230 (24)	9,230 (41.5)	9,230 (50.5)	9,230 (57)	5,180 (61)
45				7,630 (33)	7,630 (45)	7,630 (52.5)	5,180 (57.5)
50				5,960 (21.5)	6,440 (38.5)	6,440 (47.5)	5,180 (53.5)
55					5,240 (30.5)	5,520 (42.5)	5,180 (49)
60					4,170 (20)	4,560 (36.5)	4,560 (44.5)
65						3,580 (29)	3,580 (39.5)
70						2,570 (19)	2,570 (34)
75							1,530 (27.5)

A6-829-009608A

ON RUBBER (STATIONARY - DEFINED ARC OVER REAR)

Radius in Feet	Main Boom Length in Feet						
	35	40	50	*60	70	80	90
10	40,000 (66)	40,000 (69.5)					
12	32,150 (62.5)	32,150 (66.5)					
15	24,900 (56.5)	24,900 (61.5)	24,900 (67.5)				
20	18,200 (45)	18,200 (52.5)	18,200 (61)	18,200 (66.5)	11,700 (70)	8,310 (73)	
25	14,350 (29.5)	14,350 (42)	14,350 (54)	14,350 (61)	11,700 (65.5)	8,310 (69)	
30		11,600 (28)	11,600 (46.5)	11,600 (55)	11,600 (61)	8,310 (65)	
35			9,220 (37)	9,220 (49)	9,220 (56)	8,310 (61)	
40			7,400 (24)	7,400 (41.5)	7,400 (50.5)	7,400 (57)	5,180 (61)
45				5,970 (33)	5,970 (45)	5,970 (52.5)	5,180 (57.5)
50				4,810 (21.5)	4,810 (38.5)	4,810 (47.5)	4,810 (53.5)
55					3,650 (30.5)	3,650 (42.5)	3,650 (49)
60					2,630 (20)	2,630 (36.5)	2,630 (44.5)
65						1,920 (29)	1,920 (39.5)
70						1,400 (19)	1,400 (34)
75							1,000 (27.5)

A6-829-009606A

ON RUBBER (STATIONARY - 360°)

Radius in Feet	Main Boom Length in Feet			
	35	40	50	*60
10	31,650 (66)	31,650 (69.5)		
12	21,350 (62.5)	21,350 (66.5)		
15	14,300 (56.5)	14,300 (61.5)	14,300 (67.5)	
20	9,220 (45)	9,220 (52.5)	9,220 (61)	9,220 (66.5)
25	6,760 (29.5)	6,760 (42)	6,760 (54)	6,760 (61)
30		4,260 (28)	4,260 (46.5)	4,260 (55)
35			2,150 (37)	2,150 (49)
40			1,060 (24)	1,060 (41.5)

Note: () Boom angles are in degrees.

*60 ft. boom length is with inner-mid extended and outer-mid & fly retracted.

A6-829-009607A